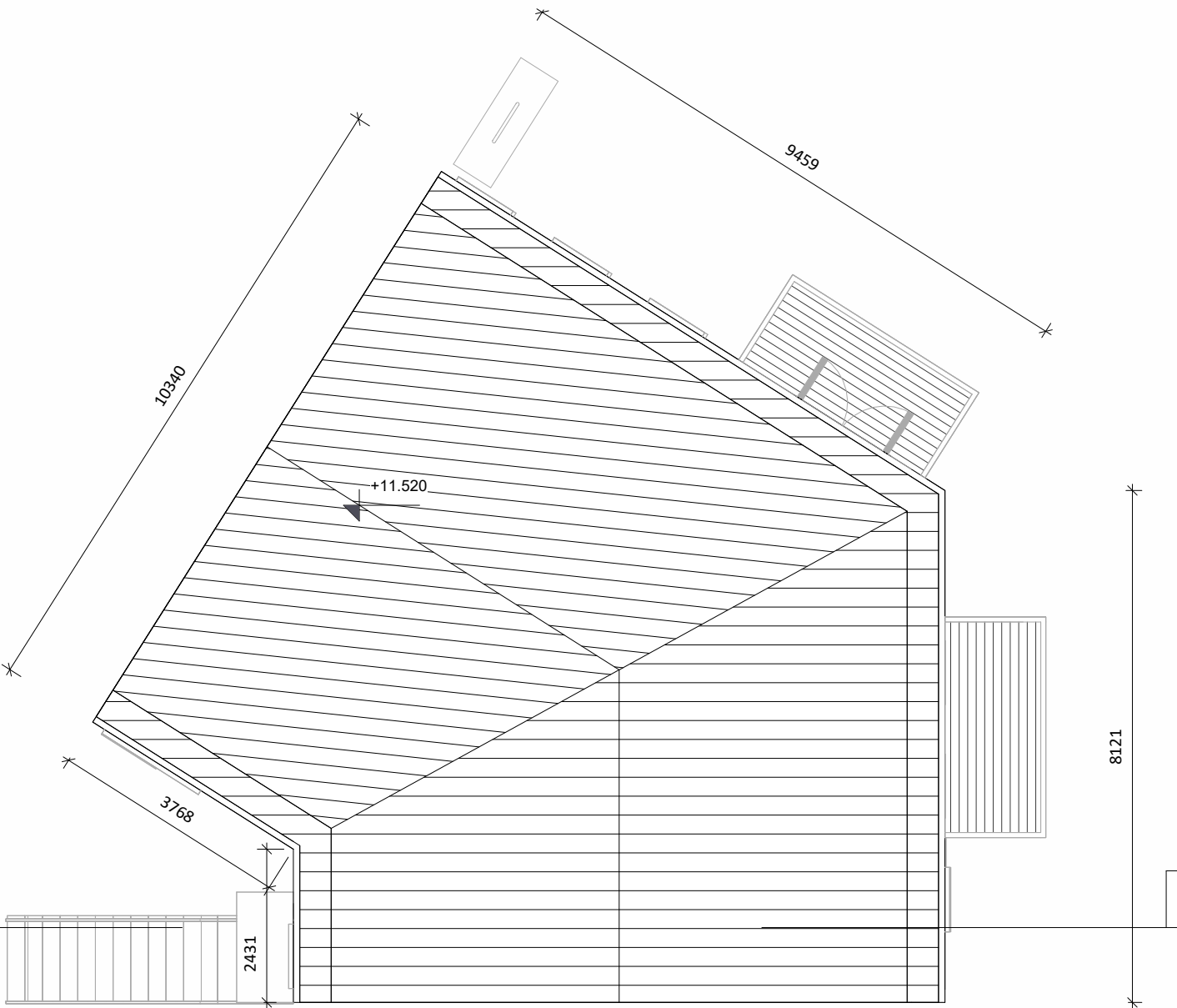




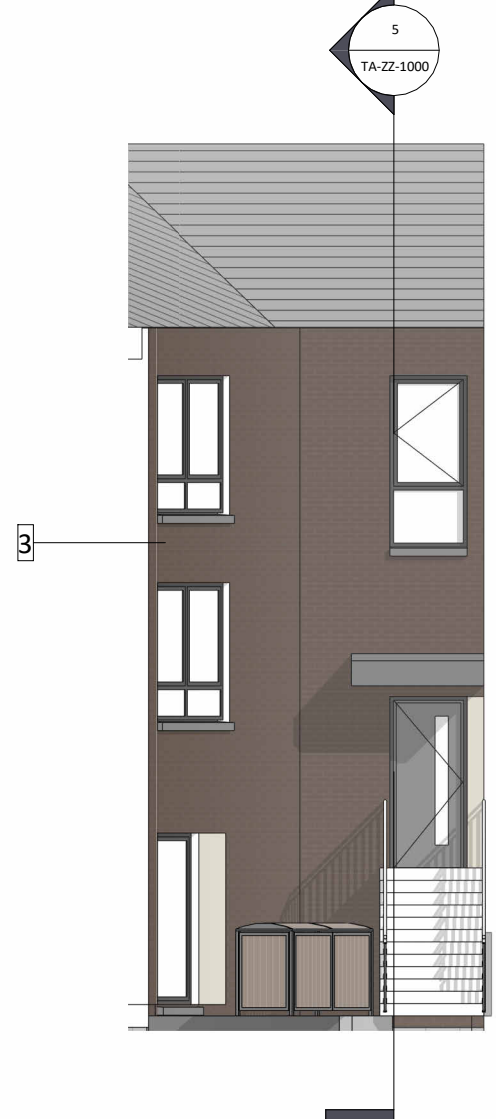
2 First Floor Plan  
1:100



4 Roof Plan  
1:100



7 TA - Front Elevation  
1:100



6 TA - Rear Elevation  
1:100



1 Ground Floor Plan  
1:100



3 Second Floor Plan  
1:100



5 Section AA  
1:100

## Site 3 Triplex Type TA

- Materials Legend**  
(Finishes to Architects' later selection)
1. Brick - Buff Tone
  2. Self-coloured Render - Ivory Tone
  3. Brick - Warm Brown Tone
  4. Brick - Smoked Red Tone
  5. Self-coloured Render - Warm Grey Tone
  6. Engineered Brick - Grey Tone
  7. Clay Brick - White Tone
  8. Self-coloured Render - Off-White Tone
  9. Zinc Metal Finish
  10. Galvanised + Powder-Coated Metal - Grey

## Unit Types

- T3A  
Calculation Failed

Revision Description	Date	Rev. No.	Issued by
Issued For Planning	28.03.2025	A3-C01	CM
Any reference to fire safety design or performance is presented for coordination purposes only. Refer only to the granted Fire Safety Certificate, and fire consultant's information for fire safety design, specification and performance.			
Figured dimensions only to be used. This drawing is copyright of O'Mahony Pike Architects Ltd. All information is shared as per approved use in accordance with ISO19650-2:2018, Table 5; Standard Codes for Suitability of Models and Documents and the BEP. If the 'Status' field is empty, this information has been shared at S0 - WIP.			

<div>o'mahony pike</div>				Project Code: KSG3		Scale @ A1: As indicated	
<div>architecture urban design</div> <div>email: info@omahonypike.com</div> <div>tel: +353 1 202 7400</div> <div>fax: +353 1 283 0822</div> <div>www.omahonypike.com</div> <div>Dublin</div> <div>The Chapel</div> <div>Mount St. Anne's</div> <div>Milltown, Dublin 6</div> <div>D06 XN52 Ireland</div> <div>Cork</div> <div>One South Mall</div> <div>Cork City</div> <div>Co. Cork</div> <div>T12 CCN3 Ireland</div>				Project Lead: DMcD		Date: 28.03.2025	
				Drawn By: SM		Revision: A3-C01	
				Job No.: KSG3		Status: S2	
				Purpose: Planning			
Project:		Kishoge Part 10 Application					
Location:		Clonburris, Co. Dublin					
Client:		South Dublin County Council					
Drawing Title:		Site 3 Triplex Type TA					
Drawing No.:		KSG3-OMP-TA-ZZ-DR-A-1000					

Source File: KSG3-OMP-TA-ZZ-DR-A-1000.rvt